

Chemical System : Coin Type Manganese Dioxide Lithium battery

Model No. : CR2025

Nominal Dimensions : $\Phi 20.00 \times 2.50\text{mm}$

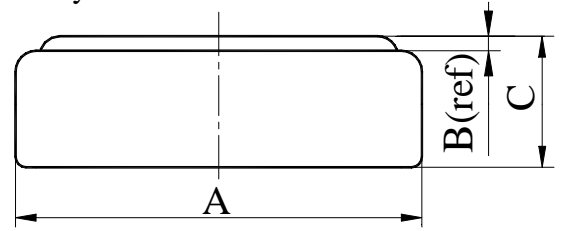
Nominal Voltage : 3.00V

Average Weight : 2.50g

Applications : Watch, calculator, electronic toy, etc.

Shelf Life : Not less than 95% of the service capacity, following 1st year storage at 20°C.

Standard Capacity : 150mAh(continuous discharge at 20°C under 0.10m A discharge current to 2.0V voltage)



Dimensions	Unit: mm
A	19.70----20.00
B	0.25(ref)
C	2.20----2.50

Discharge Characteristics (20°C)

