

TECHNICAL SPECIFICATION

Model: AG10

Chemical System: Alkaline button cell

Model No. : LR1130 (LR54 AG10 189)

Nominal Dimensions : φ 11.60×3.10mm

Nominal Voltage: 1.50V

Average Weight: 1.11g

Applications : Watch, calculator, electronic toy, etc.

Shelf Life : Not less than 90% of the service capacity,

Following 1st year storage at 20°C.

Discharge Resistance : 1000Ω (20°C)

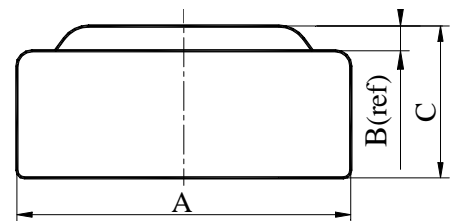
Cut-off Voltage : 0.90V

Nominal Capacity : 72mAh

Cause for use : 1. There are risks of electrolyte leakage or causing damage to the device if the battery is charged;

2. The battery shall be installed with “+” and “-” in correct position;

3. Short-circuiting and heating the battery, disposing of the can must not be permitted.



Dimensions	Unit: mm
A	5.70----5.80
B	0.15(ref)
C	1.95----2.15

Typical Discharge Characteristics (20°C)

